



Woodlands Malpas, Newport

A stunning development of 7 luxury detached homes set in the grounds of Woodland House

The Woodlands is ideally located close to local amenities and road communications giving access to Newport, Cardiff, Bristol and Cwmbran.

Each property has been carefully designed to provide high quality living space with features including bath stone detailing, attractive uPVC sash windows and stylish bathrooms. The large open plan kitchen/family room in each home is an impressive highlight with granite work surfaces, LED lighting and French doors to garden.

Plots 1 & 2 enjoy individual private driveways off Woodland Drive and Plots 3 – 7 will be accessed through the impressive electric gated main entrance.

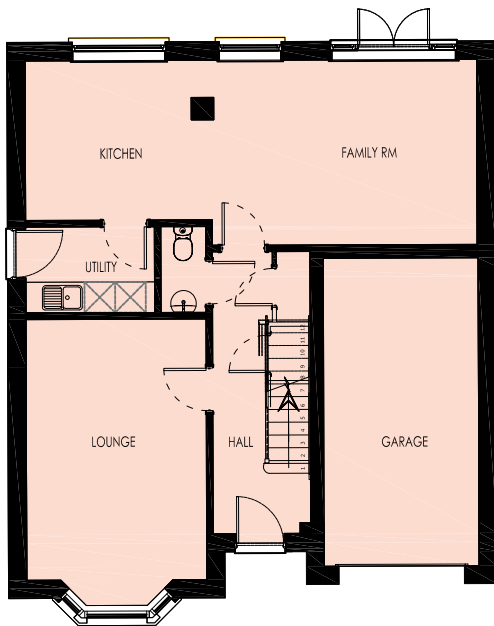
The beautiful Woodland House is being sensitively renovated to retain original features and provide six luxurious apartments.

To discuss this exciting development please contact Nuttall Parker, Newport 01633 212666.

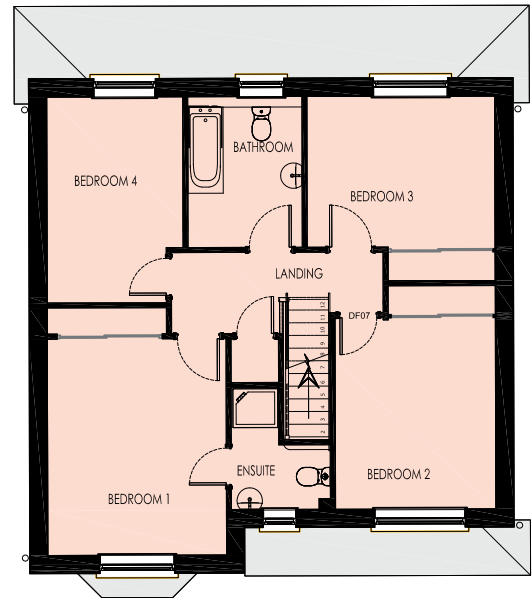


THE PINE

A stylish 4 bedroom home with a spacious living area and kitchen area.



GROUND FLOOR PLAN



FIRST FLOOR PLAN